

**CULVER CITY ROCK AND MINERAL CLUB**  
**P.O. BOX 3324 Culver City, Ca 90231**

## **September 2008**

Monday, September 8, 6:30 pm **Executive Committee: Multi-Purpose Room in the Veterans Bldg.**

Monday, September 8, 7:30 pm **GENERAL MEETING Multi-Purpose Room in the Veterans Bldg**

(Program for the Meeting: Leza Junnila, expert with hands-on experience with rare minerals.)

### **SEPTEMBER PROGRAM** **September 8, 2008 7:30 pm**

#### **Leza Junnila, expert on rare minerals**

Coming to our meeting on the 8th of September will be a mine owner and a published author with a book on the New Idria Mining District. Leza Junnila is an expert with hands-on experience with the rarer minerals to be found in the area of southern San Benito county.

Benitoite, Fresnoite, Milanite, and Topazolite as well as many others too numerous to mention, will be discussed in relation to the mining district, which she knows so well. She herself owns a mine that is the world's only source of macro Fresnoite crystal specimens.

This is a real opportunity to hear inside info that could impact future field trip possibilities. I know I'm looking forward to it. Another outstanding presentation to invite people to. September 8, don't miss this one!

See you there,  
Ed Montgomery,  
Program Chair

### **PRESIDENT'S MESSAGE**

The Club Picnic on Sunday, August 17 at our favorite place, Carlson Park, went smoothly with good attendance. Burgers and dogs and fixin's aplenty, along with potluck goodies, made a contented fullness on a sunny afternoon in preparation for the leisurely long silent auction. Thanks to Sue Acosta, director of ceremonies; to Woody Shaffer, griller commandante; Bruce Mensinger, auction maestro and treasurer.

Ellen Moe brought crystal specimens donated by Dragon (a show dealer). That added real punch to the auction. She also brought a bag-o-dirt from the Ocean View mine and demonstrated the sorting, sifting and spraying she employs in her thoroughness to find the various things of value that the mine offers.

Turned out to be a pretty darn good picnic. Hope to see ya there next year.

Edgar, the Prez

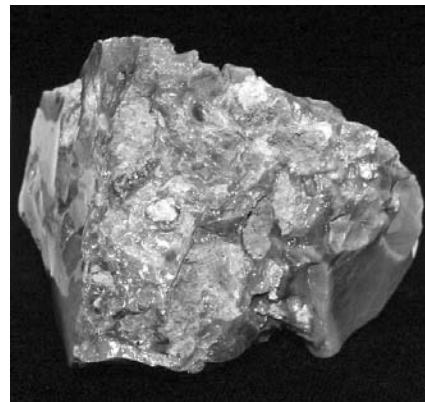
### **SPENCER OPAL**

By Mike Baldwin

Spencer, Idaho, population 38, is home to one of the largest opal deposits in the United States. Two lost deer hunters discovered opal in this area in 1948 and the first claim was filed in 1952. Now there are four commercial opal companies. Though white is the most common color around the world, Spencer miners find rare red, pink and blue opal.

**Rough opal specimen.** ▶

**Source: Wikipedia**



The primary formation of the Spencer opal mines is a rhyolite and obsidian flow filled with gas pockets. The secondary deposit is a solution of silica and water, trapped within the rock and released by a series of geysers. As a result of several eruptions over a period of time, the opal is found in layers. Most of the layers are very thin. These thin layers, hydrothermally deposited inside hollow geodes, produce some extremely high quality precious opal which is very transparent with great color intensity. Opal is brittle, heat sensitive, and it scratches or breaks easily. Some varieties even self destruct through loss of water. Even with these delicate qualities, opal remains as a precious gemstone due to its unsurpassed beauty.

Opal has been a treasured gemstone for centuries. Romans adored the opal as a token of hope and purity. Greeks thought that opal yielded foresight and prophecy. Arabs thought that it was a gift from heaven, and Asians viewed it as sacred.

## MINUTES EXECUTIVE MTG August 11, 2008

**Those present:** Ed Montgomery, Rick & Mary Ellen Shaffer, Dolores Dace, Bruce Mensinger, Robert Thirlaway, Leda Rogers, Lucia Pasquinelli, Athony Ferrari, Sue Acosta  
The meeting was called to order at 6:40 pm by President Ed Montgomery. The June minutes were approved as published in the Nugget.

## SPENCER OPAL – *Continued*

Opal is the most colorful of all gems. Flashes of iridescent color seen in an opal change depend upon the angle from which the stone is viewed. The value of an opal is determined by the intensity and distribution of these flashes of color.

Crazing (internal cracking) may occur in opals if they are removed from damp conditions and allowed to dry too quickly. Crazing may also take place from vibration, such as during the cutting and polishing of specimens. A very gradual drying process over months, or sometimes even years, can sometimes stabilize stone and allow it to be cut and polished. Opals which show a play of color are called precious opals and those that do not show a play of color are called common opal. The most desired opal is a black opal, which has a dark blue, dark green, or black background and a strong play of color. White opal (white, yellow, or cream) with a strong play of color is also highly desired followed by Mexican fire opal, which is a transparent or translucent orange-red common opal.

The Spencer Opal Mines are located in Southeastern Idaho, about 70 miles north of Idaho Falls along I-15, 70 miles west of Yellowstone National Park.

The mines are not open to the public, but there are several times throughout the year when you can dig (for a fee). For more information about the mines and digging times call: (208) 374-5476 (May to October); (928) 859-3752 (November-April) or email [Info@SpencerOpalMines.com](mailto:Info@SpencerOpalMines.com).

### **References:**

*Idaho's high desert Hides Opal:* [www.opalstore.com/news1.htm](http://www.opalstore.com/news1.htm)  
*Headquarters of the Original Spencer Opal Mine:*  
[www.SpencerOpalMine.com](http://www.SpencerOpalMine.com)  
*Via: The Rock Collector 2/04, via Gem Cutters News 10105 & Breccia, 3/06, the Rockhounder July-August 2008*

### **Old business:**

- Show - Dolores Dace reported on the results of the registration forms (962). Lucia Pasquinelli reported on the dealers, who were generally satisfied, saying they will do their own publicity if we supply them with post-cards. She would like to have more emphasis on show cases including possibly dioramas.
- Robert Thirlaway was nominated and elected to continue as Show Chair.
- Next year's Show dates are July 10, 11 & 12.
- Leda Rogers, membership chair, has designed a new membership badge which will be given to members soon. Robert Thirlaway, show chair, said we made a profit of almost \$5,500.
- Anthony Ferrari, webmaster, had some insurance forms for the president to sign; also a form for suggested ex-presidents' pin (golden bear).
- It was moved and passed to have an extra meeting off site to discuss the Show in detail.

The meeting was adjourned at 7:30 pm.

Respectfully submitted,  
Sue Acosta  
Recording Secretary

## MINUTES OF THE GENERAL MTG August 11, 2008

The meeting was called to order at 7:40 pm by President Ed Montgomery. Steve Dover, Trading Post, led the Pledge of Allegiance. The June minutes were approved as published in the Nugget.

- New members and guests were welcomed: Lisa Valdez, Frances McArthur, Marisssa Wiedeman, and Flavia Faustini.
- Robert Thirlaway will continue as Show Chair. He gave a report on the Fiesta of Gems Show - it was a good show with many volunteers. One vendor was a no show but Lucia Pasquinelli found a substitute. Next year's Show will be July 10, 11 & 12. Robert thanked all who helped.
- Leda Rogers, membership chair, has membership cards available.
- Sue Acosta, hospitality/social chair, discussed the Club picnic on Sunday, August 17.
- There will be the Trading Post immediately after adjournment. The meeting was adjourned at 8:00 pm.

Respectfully submitted,  
Sue Acosta  
Recording Secretary

## SHOP REPORT: Picnic and Silent Auction

Sunday, August 17 was the annual club picnic, a relaxed event held at shady Carlson Park in Culver City. In addition to good food and congenial company, the picnic always includes a silent auction. As usual, the auction material was mostly rough and slab-cut rock from donations. This year the donations were more abundant and of higher quality than has been the case for the last couple of years. I brought more than one hundred pounds of rock, Ellen Moe added a flat containing about 30 individually labeled and boxed mineral samples and Ken Rogers donated a sphere on a wood pedestal. Bidding on some items was spirited; while we are commonly known as rock hounds, sometimes we could be mistaken for rock sharks. At the end, happy, successful bidders carried home everything except one mineral sample and about seven pounds of rock.

### Come to the Club Lapidary Shop

I returned the leftover rock to the shop where it joined several hundred pounds of rough and slabs, most of it available free, for your use. Come to the shop, gather material, stay to work up your material or just to talk. I have said it before but it is worth repeating: The shop is one of the better collecting sites in Southern California, where you can certainly count on finding more variety of rocks and minerals than on any other field trip.

### Club Library

In addition, the club library, over 450 volumes and growing, is now housed at the shop and available for you to browse or borrow books, magazines, and video tapes. Geology, mineralogy, history, museum collections, where to find and collect, how to make jewelry; you will find information on almost every rock and mineral subject. Shop hours are listed on the last page of every issue of the *Nugget* and on the club website:

*www.CulverCityRocks.Org/shop.*

Bruce Mensinger  
Shop Chairman



▲ The Club library has more than 450 volumes of books, magazines and video tapes.

### Shop Hours and Information

**10866 Culver Blvd., Culver City**  
(behind the Boy Scout clubhouse and  
next to the paddle tennis courts)  
**Shop Phone: (310) 836-4611**

#### Hours:

Tuesday	7:30 pm - 9:30 pm	Bruce Mensinger
Wednesday	10:00 am - 2:00 pm	Vern Lowe - <i>by appointment</i>
Thursday	10:00 am - 2:00 pm	Woody Shaffer
Saturday	12:00 am - 4:00 pm	Lynne Lukert
Sunday	1:00 pm - 4:00 pm	Bruce Mensinger

If no one shows, the shop may close early.

If you plan to arrive at the shop more than a half hour after the opening time, phone the instructor.

The shop is open to all members in good standing over the age of 13 (with restrictions for ages 13 - 18)

who sign an indemnification form.

Instruction is available at all sessions.

Practice slabs are available.

## PROGRAM REPORT: Diamonds: the King of Gems

The program held on August 11, was presented by Fred Ward. It was titled "Diamonds: the King of Gems." The variety of colors in diamonds was shown. They were first discovered in a mine at Golconda, India about 400 B.C. and the mine was active until 1730. A famous diamond, the Dari-i Nur (185 carats) from that area was among the Crown Jewels of Iran (Persia). The countries where most of the diamonds were discovered are: Egypt, India, Turkey and Iran (Persia). In 1870 diamonds were discovered in South Africa. Cecil Rhodes consolidated the Kimberly mines into the De Beers cartel. Those mines were closed in 1914 after producing 15.5 million carats. For years De Beers had almost total control of the market. In the 1830's Brazil produced some diamonds. Slides of some famous diamonds were shown:

- The Oppenheimer (253.7 carat yellow, now in the Smithsonian Museum);
- the Cullinan at 3,106.75 carats - found in 1905.

In Namibia, De Beers under the name of Namdeb, harvests diamonds washing ashore. These small diamonds are sorted by machine. Three different ways of sorting diamonds were shown: a slanted greased table, sorting box with gloves and high intensity X-ray now being used. Botswana is a major producer. Siberia has high quality crystals. In Australia the Argyle mine, a lamproite pipe, produces red and yellow diamonds. They call their brown ones either "champagne" or "cognac." It now produces one-fourth of the world's diamonds. In the U.S., James Archer digs in the Crater of Diamonds State Park for yellow Arkansas gems. Hilary Clinton as governor's wife wore one. In Canada in 2002 the Ekati mine was opened. It will not be under De Beers, but will be independent.

Today about 120 million carats a year are produced. Of these only 500 are flawless. Ward showed some of Elizabeth Taylor's extensive collection including the Krupp ring, 33 carats.

The London Central Selling Organisation sorts, grades and sells about 1/2 of the world's diamonds. In Israel robotic cutting is used. Most of the cutting is done in India by hand.

Jeweler Harry Winston, cut a 342 carat white in half to make two pear-shaped stones. The U.S. cuts most of the big diamonds.

Some diamonds fluoresce either in black light (violet ray) or daylight. He showed the Max Drukker black



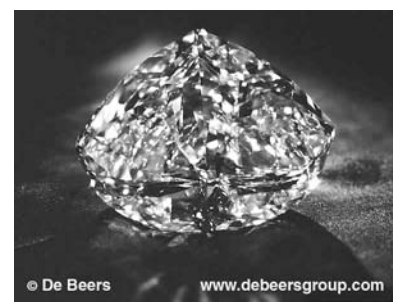
The Hope Diamond is a large, 45.52-carat, deep blue diamond, now housed in the Smithsonian Natural History Museum. The diamond is legendary for the curse it supposedly puts on whoever possesses it.

Source: Wikipedia

diamond, the Star of Amsterdam, 33.74 carats. In the Smithsonian collection the Portuguese diamond fluoresces in daylight; the Hope diamond (grayish blue), 45.52 carats is the most famous. It was found in India. King Louis XIV owned it. It was stolen and recut. Also there are the Tiffany, 128 carats; the Red Cross, 205 carats; the Taylor-Burton, 64042 carats; the Baumgold Brothers, 111 carats; and the Portuguese, 127 carats.

To celebrate their centenary, De Beers had a 273 carat diamond cut from a 599 carat rough. It is the largest modern cut flawless.

The 273 carat Centenary diamond was cut from a 599 carat rough that was discovered in 1986.



The various uses of industrial diamonds were shown: all types of drills from dentistry to oil wells; glass carving, grinding grooves in roads, scalpels and saws. Diamonds can now be produced in the laboratory. As usual Mr. Ward presented a fascinating program.

Respectfully submitted,  
Sue Acosta,  
Recording Secretary

**Welcome New Members!**

**Harriet Earle**

## SEPTEMBER BIRTHDAYS

Kurt A. Schiel	Sept 1
Rosemary Lackey	Sept 2
Robyn Hawk	Sept 12
Christina Nordeen	Sept 13
Monika Schiel	Sept 17
Darren Siegel	Sept 17
Barbara Hippensteel	Sept 19
Sigrid Russ	Sept 28
Harriet Earle	Sept 30

## MONTHLY SHOW DATES SEPTEMBER 2008

### September 13 - 14 2008, Downey, CA

Delvers Gem & Mineral Society  
Woman's Club of Downey  
9813 Paramount Blvd  
Hours: Sat. 10 - 6; Sun. 10 - 4  
Guynell Miller (562) 633-0614  
Email : guynellallen@sbcglobal.net

### September 20 - 21 2008, Paso Robles CA

Santa Lucia Rockhounds  
Pioneer Park Museum  
2010 Riverside Drive  
Hours: 10-5 both days  
Mike Doherty (815) 466-4061  
Email: mdoherty@tcsn.net

### September 20 - 21 2008, Redwood City CA

Sequoia Gem & Mineral Society  
Community Activities Building  
1400 Roosevelt Ave.  
Hours: 10-5 both days  
Carol Corden (650) 248-7155  
Email: ccorden@earthlink.net  
Website: <http://sgms.driftmine.com/home.htm>

### September 25 - 28 2008, San Bernardino CA

Orange Belt Mineral Society, Inc.  
Western Region Little League Ball Park  
6707 Little League Dr.  
Hours: 9 a.m. - Dusk each day  
Emma Rose Couveau (951) 288-6182

### September 27 - 28 2008, Monterey, CA

Carmel Valley Gem & Mineral Society  
Monterey Fairgrounds  
2004 Fairgrounds Rd.  
Hours: Sat. 10 - 6; Sun. 10 - 5  
Sky Paston (831) 417-7477  
Email: sky@familystones.net  
Website: [www.cvgms.org](http://www.cvgms.org)

### September 27 - 28 2008, Stockton, CA

Stockton Lapidary and Mineral Club  
Scottish Rite Masonic Center  
33 West Alpine Ave.  
Hours: Sat. 10 - 5; Sun. 10 - 4  
Nettie Meissner (209) 858-2263  
E-mail: [footsey1@yahoo.com](mailto:footsey1@yahoo.com)

*Happy Birthday!*

## MEMBERSHIP REPORT

September is back to school month and a lot of our members have signed up for the jewelry classes at Venice High School. If you couldn't get in, there is always our shop where you can not only use the lapidary equipment but have full use of the soldering station and jeweler's bench with some tools that are available. There is also a polishing unit in the back room. If you are unfamiliar with where things are just ask the person in charge or another club member who will be happy to show you around. They will be more than happy to show you the ropes.

I will hopefully be handing out our new badges for 2008 at our September meeting and will continue through subsequent meetings. The badges will have a new look to them. So please be sure to pick up your badges at the meeting. I will not be mailing out the badges. I want to thank all of you who support the club by attending the meetings. We love seeing you there and hope those of you who haven't been to a meeting for a while will attend one real soon!

Leda Rogers  
Membership Chair

The purpose of the CULVER CITY ROCK & MINERAL CLUB is to bring together persons interested in the earth sciences, to engage in research and study in this realm, and to assist members in the collection and preservation of rocks and minerals and in the study of lapidary and related arts.....<http://www.culvercityrocks.org>

## Officers for 2008

**President** - Ed Montgomery  
**Vice President** - Rick Shaffer  
**Treasurer** - Mary Ellen Shaffer  
**Recording Secretary** - Sue Acosta  
**Corresponding Secretary** - Leda Rogers  
**Federation Director** - Anthony Ferrari  
**Field Trips** - Ellen Moe  
**Historian** - Bruce Mensinger  
**Librarian** - Ted Hanf  
 Co-chair - Bruce Mensinger  
**Membership** - Leda Rogers  
 Co-chair - Open  
**Minerals** - Lorraine Murphy  
**Parliamentarian** - Open  
**Photography** - Leda Rogers  
 Co-chair - Sylvia Binkley  
**Program** - Ed Montgomery  
**Publications** - Lynne Lukert  
 Co-chair - Barbara Fier  
**Show** - Robert Thirlaway  
**Publicity** - Robyn Hawk  
**Shop** - Bruce Mensinger  
**Social** - Sue Acosta  
**Sunshine** - Lili Gelberg  
**Trading Post** - Steve Dover  
**Web Master** - Anthony Ferrari  
**Workshops** - Brad Smith

## BOARD OF DIRECTORS

Woody Shaffer(2008)  
 Gary Mitchell (2008)  
 Sue Acosta (2008)  
  
 Dolores Dace (2009)  
  
 Bruce Mensinger (2010)

## MEETING SCHEDULES

General Meetings are held the second Monday of every month\* at 7:30 p.m. in the Culver City Youth Center, 413 Overland Ave. Enter from the rear door. Guests are always welcome.

Executive Committee Meetings are held the first Monday of every month\* in a meeting room behind the Veterans Auditorium. All club members are welcome.

\*Meeting days occasionally change due to Monday holidays or, in July, due to the Fiesta of Gems Show (July 10, 11 & 12, 2009).

## DUES & FEES

One time Initiation Fees:

Individuals	\$20.00
2 Persons/Same Address	\$25.00
Juniors	\$15.00

Yearly Membership Dues:

Individuals	\$25.00
2 Persons/Same Address	\$35.00
Juniors	\$10.00

(After July 1, dues are \$15.00, \$25.00 and \$5.00 respectively.)

## SHOP INFORMATION

The shop is open to all members in good standing over the age of 13 (13-18 have certain restrictions) who sign an indemnification form. Instruction is available at all sessions. Practice slabs are available.

Location: 10866 Culver Blvd. in Culver City (behind the Boy Scout clubhouse and next to the paddle tennis courts)

Shop Phone: (310) 836-4611

## Hours:

Tuesday	7:30 pm - 9:30 pm	Bruce Mensinger
Wednesday	10:00 am - 2:00 pm	Vern Lowe - <i>by appointment</i>
Thursday	10:00 am - 2:00 pm	Woody Shaffer
Saturday	12:00 am - 4:00 pm	Lynne Lukert
Sunday	1:00 pm - 4:00 pm	Bruce Mensinger

If no one shows, the shop may close early. If you plan to arrive at the shop more than a half hour after the opening time, phone the instructor.

## The Nugget

The deadline for all submissions is generally the 15th of every month. All articles or notes without a byline are written by the Editor. Permission to copy is freely given as long as proper credit is noted.

The *Nugget* accepts paid advertisements by club members and non-members. The cost for an eighth of a page (approx. 2" high x 3.5" wide) is \$7 per insertion, payable in advance. Ad location is at the discretion of the Editor. Ad layouts, copy or business cards must be received by the 10th of the month. Send materials directly to Lynne Lukert, Editor, 513 1/2 N. Norton Ave., Los Angeles, CA 90004



# the NUGGET

VOLUME 49

ISSUE 9

September 2008

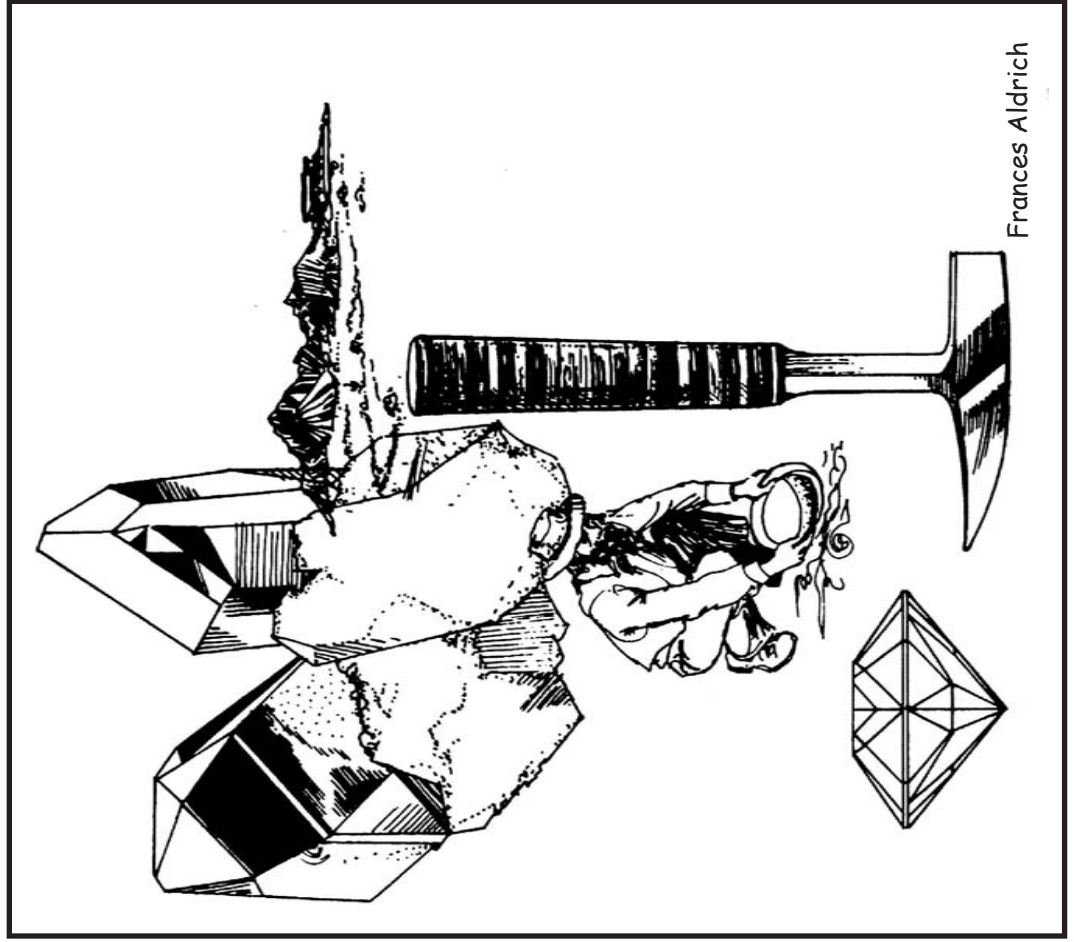
CULVER CITY ROCK & MINERAL  
CLUB, INC.  
CULVER CITY, CALIFORNIA, USA

## FIRST CLASS



CULVER CITY ROCK & MINERAL CLUB

the Nugget  
Lynne Lukert, editor  
513 1/2 N. Norton Ave.  
Los Angeles, CA 90004



Frances Aldrich