

---

CULVER CITY ROCK AND MINERAL CLUB  
P.O. BOX 3324 Culver City, CA 90231

**DECEMBER 2013**

**Culver City Rock and Mineral Club  
Member's Annual Holiday Party**

**MONDAY, DECEMBER 9**  
**CULVER CITY ROTARY PLAZA**  
5400 Overland Avenue  
Culver City

Festivities begin at 6 pm  
**Dinner at 6:30 pm**

*Bring a side dish or something special to share.*

The evening will include installation of officers for 2013  
followed by the infamous

**WHITE ELEPHANT GIFT EXCHANGE**

The evening will wrap up by 9 pm



**PRESIDENT'S MESSAGE**

I'd like to welcome all those who were elected as our club officers for the new year. The fact that there are few changes serves as a testament to the stability of our leadership and our steadfast direction as a club. A hearty tip-of-the-hat to all those who work each month to keep our club lively, interesting, educational and entertaining.

And to all I wish you happiness and merriment at both our club party this month and in the holidays that follow.

Please keep safe and warm,  
**Brad Smith**  
President

---

## MINUTES OF THE EXECUTIVE MEETING NOVEMBER 11, 2013

- **Those present:** Steve Dover, Felice Ganz, Ana Maria Guimaraes, Lynne Lukert, Paul Madison, Bruce Mensinger, Ellen Moe, Minda Moe, Darrell Robb, Ken Rogers, Leda Rogers, Mary Ellen Shaffer, Brad Smith and Jette Sorensen.
- The meeting was called to order at 6:42 pm by President Brad Smith.
- The October executive meeting minutes published in The Nugget issue of November were approved as read.
- **Treasurer Report:** Darrell Robb reported the Club was solvent and that the Club's investment portfolio was doing well.
- **Publication Report:** Lynne Lukert purchased the InDesign software package. Darrell Robb was able to secure pricing and no-tax rate available to non-profit organizations at the USC bookstore. A motion was made and approved, for the Club to pay for the full amount.
- **Membership Report:** Felice Ganz reported the Club had 158 members, not including new membership submitted that evening. She indicated new badges were being ordered from the new supplier at \$7.50 apiece. Ms. Ganz also informed she had been sending email meeting invitations to people who had expressed interest at the Gem Fiesta Show.
- **Social Chair Report:** Mary Ellen Shaffer reported the Holiday Party would take place at the Rotary Club on December 9, from 6 to 9 pm. She was able to locate Lily Gelberg's grandson, who informed Ms. Gelberg had passed away. A motion was made and approved, for the Club to donate \$100 to the Young Singers Foundation on behalf of Ms. Gelberg, a charitable organization she supported. Ms. Shaffer requested volunteers to help set up the Holiday Party; Leda Rogers, Bruce Mensinger, Lynne Lukert and Steve Dover volunteered.
- **Librarian Report:** Paul Madison installed a password protected application on the shop's laptop that allows users to navigate the library. He informed he had not been able to purchase a new, Internet-enabled computer for the promotional prices he had previously seen, and recommended that the funds approved to purchase the computer be used to purchase books instead. Mr. Madison and Bruce Mensinger will coordinate the library data base updates.
- **Federation Director Report:** Ellen Moe was not able to attend the Federation meeting this month, but informed that the Federation's show will be in the first week of June and recommended the Club gets a display case.
- **Programs Report:** Ellen Moe reported that Steve Hardinger from Dragon Minerals will be the January guest speaker. She reminded that the Club still needs a volunteer to take the Programs Chair position in 2014. Felice Ganz informed that a new member, Norma Johnson, had expressed interest in supporting the Club on programs and the shop.
- **Shop Report:** Bruce Mensinger reported that the shop was using mineral oil, and shop users had been reporting fewer allergies. Mr. Mensinger also informed that new fans for the saws had been found. Jette Sorensen informed there were no volunteers to help with the beautification of the shop; Mr. Mensinger then volunteered, and Mary Ellen Shaffer said that Rick and Woody Shaffer would probably help as well.
- **Show Report:** Ken Rogers reported that he had been approaching several potential vendors and that there should be six tables available for education and demonstration at the 2014 show. He informed that the themes of 'Rubies & Emeralds' had been suggested, due to 2014 being the 75th anniversary of the movie The Wizard of Oz, filmed in Culver City. Steve Dover recommended revisiting last year's theme suggestion list before making a final decision. Brad Smith asked for volunteers to enter on a

---

spreadsheet contact information from this year's show attendees; Jette Sorensen volunteered to enter all of them.

- **Web Master Report:** Jette Sorensen reported that the Club had 283 "Likes" on Facebook. The meeting adjourned at 7:28 pm

**Ana Maria Guimaraes**  
Recording Secretary

### MINUTES OF THE GENERAL MEETING NOVEMBER 11, 2013

- The meeting was called to order at 7:35 pm, the Pledge of Allegiance was made; a quorum was established.
- President Brad Smith thanked the veterans present for their service.
- A motion was made and approved to accept the October general meeting minutes published in the November Nugget as read.
- One guest was introduced and welcomed.
- Show Chair Ken Rogers announced the Club's show would take place the last week of June in 2014. He asked the membership to start volunteering for the various jobs supporting the show. The job list would be published at the CCRMC Yahoo Group.
- Membership Chair Felice Ganz reported the Club had 158 members, not including members joining that evening.
- Minda Moe received a Thank You gift from the Club for selling the most tickets to the show this year.
- President Brad Smith asked for volunteers to support the Club officers in 2014. Rick Shaffer announced the 2014 slate of Officers and informed the Programs Chair was still vacant. A motion was made and approved, to elect the 2014 slate of Officers.

- President Brad Smith announced the Holiday Party would take place at the Rotary Club on December 9, from 6 pm to 9 pm. He asked for volunteers to set up the party beginning at 5 pm.
- President Brad Smith informed that Lily Gelberg had passed away in October and that the Club would make a donation on her behalf to a charity she supported.
- President Brad Smith informed the Executive Committee approved the purchase of InDesign, a software needed to publish The Nugget, as the current software used was very outdated and incompatible with newer computers. A motion was made and approved by the membership, to approve the expenditure.
- Field Trip Chair Rocky Rhodes announced a field trip on November 16 to North Cady Mountain.
- A break was held at 7:57 pm for refreshments and raffle, followed by the November Program.

**Ana Maria Guimaraes**  
Recording Secretary

### NOVEMBER PROGRAM REPORT

President Brad Smith presented a series of bench tips for jewelry making. Mr. Smith teaches jewelry making at the Santa Monica's Adult Education Center; he began documenting the tricks he learned in his career for the benefit of his students, so that they could become more efficient and optimize their time in class. Mr. Smith discussed several tips regarding soldering, fabrication, tools, storage and other activities involved in jewelry making. The presentation was very educational and kept the audience engaged and inquisitive. Mr. Smith's useful tips are available in his book "Bench Tips for Jewelry Making."

**Ana Maria Guimaraes**  
Recording Secretary

---

## SHOP REPORT

### Equipment Availability

As of November 18 (as I write this report) all shop equipment is working and ready for use.

### Projects update

1) Trim saws: Members of the shop committee met and discussed candidate ventilation systems for oil mist control. Current thinking favors replacing the present exhaust fan with two range exhaust hoods to be located over the trim saws.

2) New oil test in one slab saw and one trim saw. The new candidate oil has arrived and allergy tests, odor and misting testing have proved satisfactory. Further testing of blade life will begin soon (see 4 below).

3) Entry step marking was done but needs further improvement.

4) The oil leak in 24-inch saw hydraulic pump will be repaired as part of the new oil test.

### Outside rock pile

The rock pile outside the back door has begun to grow again due to more donations, both from club members and non-club members. As usual, a few pieces were reserved for Fiesta of Gems show prizes, youth programs, Trading post raffle prizes, and other Club activities. We always welcome donations of material that others might find useful (including small pieces for tumbling), but please, no dumping of junk rock.

### Call for volunteers

Jette Sorensen is leading a shop beautification and clean-up initiative. This will have repair and replacement of water damaged ceiling panels, painting, and evaluation of what equipment to keep as its main goals. We have several volunteers but more are needed. Contact Jette for more details: jetsorensen@gmail.com.

### Scout talks and tours

Rick Shaffer gave a talk to the Cub Scouts that meet in the Scout House (the front part of the shop building). About a week later I gave a talk to the Boy Scouts. This included a tour of our shop.

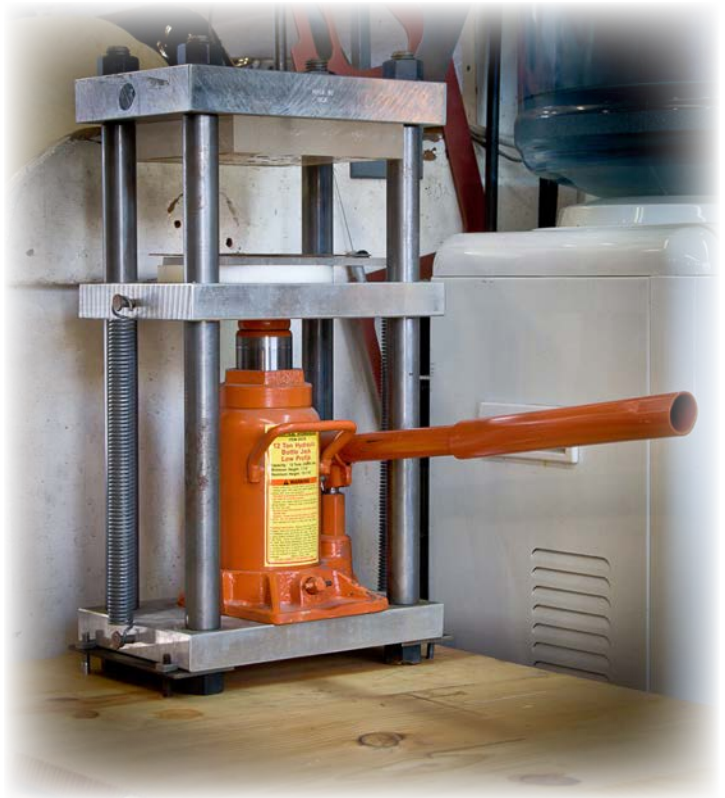
### Construction

The construction work is nearing completion. The main remaining construction is installation of rain gutters, installing irrigation and sod in front of the Scout House (please, stay on the walkways), additional asphalt sealer and, optionally, a lockable gate to block entry to the aisle between the City Gardens and our storage sheds.

Limited parking in back of the shop is open for use again. Park on the asphalt, off the alley concrete to avoid a parking citation. Please respect the space reserved for the shop supervisor next to the paddle-tennis court.

### Hydraulic press

Lynne loaned her press, with accessories and storage cabinet, to the shop on a trial basis. This allowed us to assess usage, maintenance issues, and any other considerations before money changed hands. Due to crowded conditions in the shop and lack of use, the hydraulic press has been returned to Lynne.



*photos by Bruce Mensinger*

**Bruce Mensinger**

On behalf of the Shop Committee

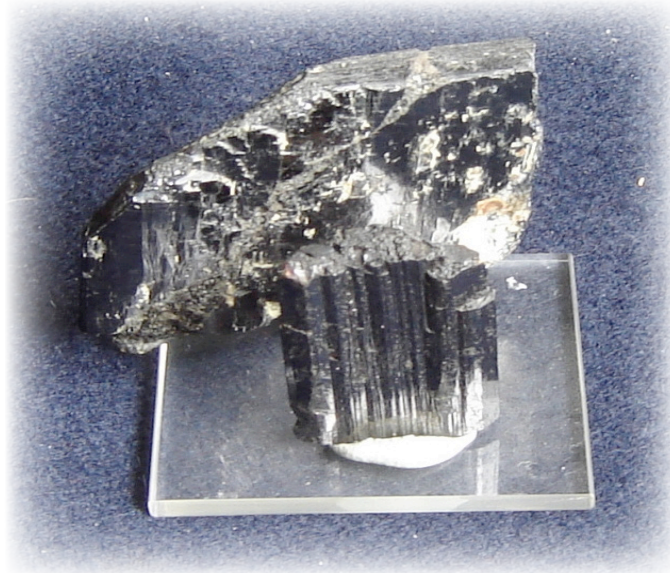
## MINERAL REPORT

### “Wolf’s Cream”

The wolframite series of minerals are the most important tungsten ore minerals, along with scheelite. The chemical element tungsten is represented by W because of wolframite. The name “wolframite” is derived from Johan Gottschalk Wallerius’ (*German*) name for the element tungsten, “wolf rahm,” (*wolf cream*) which was derived from Georg Agricola’s name for the element, lupi spuma.

Wolframite is the intermediate between ferberite and hubnerite. Ferberite is a black mineral composed of iron tungstate, while hubnerite is reddish-brown to black. Wolframite itself is grayish to brownish black, with a reddish brown streak. It is a 4 - 4.5 on the Mohs scale of hardness, with a specific gravity of 7 - 7.5.

Wolframite can be found in quartz veins, pegmatites, and other high-temperature hydrothermal veins. It is often associated with cassiterite, scheelite, bismuth, quartz, pyrite, galena, sphalerite, and arsenopyrite.



The historical localities for wolframite were Bohemia, Saxony, and Cornwall. During World War II, wolframite mines were important strategic assets, as wolframite was used in munitions and tools. Today, China has around 60% of the world’s supply of tungsten ore. It is used in electric filaments, armor-piercing ammunition and hard tungsten carbide machine tools. More recently, it is a source of debate because of unethical mining practices in the Democratic Republic of the Congo, one of the world’s producers of wolframite.

**Minda Moe**  
Mineral Chair

## MEMBERSHIP REPORT

### *Welcome New Members*

Michael Bronner  
Norma Johnson  
Anna Kazlauskene  
Dallal Khouri  
Sofie Lyddon

Emma Lyddon  
Sarah Nilssen  
Molly Zimmermann  
Shiranda Zee  
Sarah Nilsen

## BENCH TIPS

### MINI DRILL PRESS

If you find yourself drilling a number of small holes for your work, you might want to look at the small, inexpensive drill presses now available. They take up just minimal space on your bench and are always ready to give you nice straight holes. Some models even have a variable speed control. I've been very pleased with a low-priced one that's been well-used in my classes for over a year.

Because these machines are only a foot high, they're limited as to the size of workpieces that can fit into the machine and the size of the drill bits you can use. But I've had no problems with drill bits up to about 3/16" (4.5mm), even drilling steel.

The machines are sold by a number of companies. If you do get one, be sure to buy a spare belt because they are generally not available at local hardware stores.

Like these Bench Tips? Treat yourself to the book for Christmas!



### LASER WELDING

A question came up this week about how to solder some jump rings to hold blue topaz briolettes onto a necklace. We've all heard about ways to do some soldering close to a stone, and some of us have sized a ring without taking the stones out of their mounts. We've used wet paper towels, garnet sand, cooling gels, and my favorite of suspending the stone in a dish of water. All techniques bank on the principal of using a small, hot flame to do the job quickly before the stone gets hot enough to crack or change color.

But each job is somewhat of a gamble. Some stones are hardy and some are frail. Jades and jaspers will generally take a lot of heat, but I'd never chance it with the likes of topaz or opal. Trying to shield a stone from the torch is always a betting game, and sometimes you lose.

If you're worried about soldering something close to a stone, perhaps it's time to consider a no-heat method like laser welding. Most jewelry stores have laser welders these days, and the cost of having it done is quite affordable. They used to have problems doing silver, but now seem to do it routinely.

I've used a local shop twice in the last year, once for a piece with little emeralds a "friend" asked me to repair and for a second piece where I needed a safety catch and didn't want the torch heat to expose all the solder lines again.

More Bench Tips by Brad Smith are at:  
[facebook.com/BenchTips/](https://www.facebook.com/BenchTips/) or see "Bench Tips  
for Jewelry Making" on Amazon



## DECEMBER SHOWS

### DEC 13 - 15: SAN BERNARDINO, CA

Orange Belt Mineralogical Society  
Western Regional Little League Ball Park  
6707 Little League Drive  
Hours: 9 am to Dusk daily  
Contact: Ken, (909) 381-0089  
Email: kengard@roadrunner.com  
Website: <http://OBMSrocks.yolasite.com>

## DECEMBER BIRTHDAYS



Edmondo Coronel	Dec 1
Max Hippensteel	Dec 5
Virginia Hollis	Dec 6
Brian Lallement	Dec 7
Yvette Marie Trinh	Dec 9
Barbara Shaffer	Dec 10
Ellen Moe	Dec 10
Rose Marie Ihde	Dec 14
Diane Moser	Dec 19
Peaerl Jusem	Dec 25
Pattie Blake	Dec 25
Jo Baxter	Dec 28

## NOMINATIONS FOR 2014

### Culver City Rock & Mineral Club 2014 Nominations

President - Brad Smith  
Vice President - Steve Dover  
Treasurer - Darrell Robb  
Recording Secretary - Ana Maria Guimaraes  
Corresponding Secretary - Leda Rogers  
Education - Joe Porrazzo  
Federation Director - Ellen Moe  
Field trips Co-Chairs - Rocky and Cole Rhodes  
Historian - Bruce Mensinger  
Librarian - Bruce Mensinger  
Membership - Felice Ganz  
Minerals - Minda Moe  
Parliamentarian - Jette Sorensen  
Photography - Buce Mensinger  
Programs - OPEN  
Publications -Lynne Lukert  
Co-Chairs - Barbara Fier and Jan Ferguson  
Publicity - Ken Rogers  
Show - Ken Rogers  
Shop Committee (President,  
Vice President, Shop Supervisors)  
Social - Mary Ellen Shaffer  
Sunshine - Leda Rogers  
Trading Post - Steve Dover  
Co-Chair Minda Moe  
Web Master - Jette Sorensen

The purpose of the CULVER CITY ROCK & MINERAL CLUB is to bring together persons interested in the earth sciences, to engage in research and study in this realm, and to assist members in the collection and preservation of rocks and minerals and in the study of lapidary and related arts.....<http://www.culvercityrocks.org>

## Officers for 2013

President - Brad Smith  
Vice President - Steve Dover  
Treasurer - Darrell Robb  
Recording Secretary - Ana Maria Guimaraes  
Corresponding Secretary - Leda Rogers  
Education - Co-Chairs Anna Yori and Anthony Ferrari  
Federation Director - Ellen Moe  
Field trips - Co-Chairs Rocky and Cole Rhodes  
Historian - Bruce Mensinger  
Librarian - Paul Madison  
Co-Chair- Bruce Mensinger  
Membership - Felice Ganz  
Minerals - Minda Moe  
Parliamentarian - Jette Sorensen  
Photography - Buce Mensinger  
Programs - Ellen Moe  
Publications - Lynne Lukert  
Co-Chairs Barbara Fier and Jan Ferguson  
Publicity - Ken Rogers  
Show - Ken Rogers  
Show Vendor Co-Chairs - Janelle and DJ  
Shop Committee (President, Vice President, committee members)  
Social - Mary Ellen Shaffer , Co-Chair Sue Acosta  
Sunshine - Leda Rogers  
Trading Post - Steve Dover, Co-Chair Minda Moe  
Web Master - Jette Sorensen

## Board of Directors:

Mary Ellen Shaffer (2013)  
Darrell Robb (2013)  
Ellen Moe (2014)  
Bruce Mensinger (2014)  
Rick Shaffer (2015)  
Jette Sorensen (2015)

## MEETING SCHEDULE

General Meetings are held the second Monday of every month\* at 7:30 p.m. in the Multi-Purpose Room in the Veterans Bldg., 4117 Overland Ave. Enter from the rear door. Guests are always welcome.

Executive Committee Meetings are held the second Monday of every month\* in the Multi-Purpose Room in the Veterans Bldg. Auditorium. All club members are welcome.

\*Meeting days occasionally change due to Monday holidays or in July, because of the Fiesta Of Gems show.

## DUES & FEES

One time Initiation Fees:

Individuals	\$20.00
2 Persons/Same Address	\$25.00
Juniors	\$15.00

Yearly Membership Dues:

Individuals	\$25.00
2 Persons/Same Address	\$35.00
Juniors	\$10.00

(After July 1, dues are \$15.00, \$25.00 and \$5.00 respectively.)

## SHOP INFORMATION

The shop is open to all members in good standing over the age of 18 who sign an indemnification form. Instruction is available at all sessions. Practice slabs are available.

**Location:** 10866 Culver Blvd. in Culver City (behind the Boy Scout clubhouse and next to the paddle tennis courts)

**Shop Phone:** (310) 836-4611

**Hours:**

Tuesday 7 – 9:30 pm - Bruce Mensinger  
Wednesday 10 am – 2 pm - Ken Rogers or Vern Lowe  
(open by appointment)

Thursday 10 am – 2 pm - Woody Shaffer  
Saturday Noon – 4 pm - Lynne Lukert  
Sunday Noon – 4 pm - Rick Shaffer

If no one shows, the shop may close early. If you plan to arrive more than a half hour after the opening time, phone the instructor

## The Nugget

The deadline for all submissions is generally the 15th of every month. All articles or notes without a byline are written by the Editor. Permission to copy is freely given as long as proper credit is noted.

The *Nugget* accepts paid advertisements by club members and non-members. The cost for an eighth of a page (approx. 2" high x 3.5" wide) is \$7 per insertion, payable in advance. Ad location is at the discretion of the Editor. Ad layouts, copy, or business cards must be received by the 10th of the month. Send materials directly to Lynne Lukert, Editor, 601 N. Bronson Ave., Los Angeles, CA 90004





# the NUGGET

VOLUME 53  
ISSUE 12  
DEC 2013

CULVER CITY ROCK & MINERAL

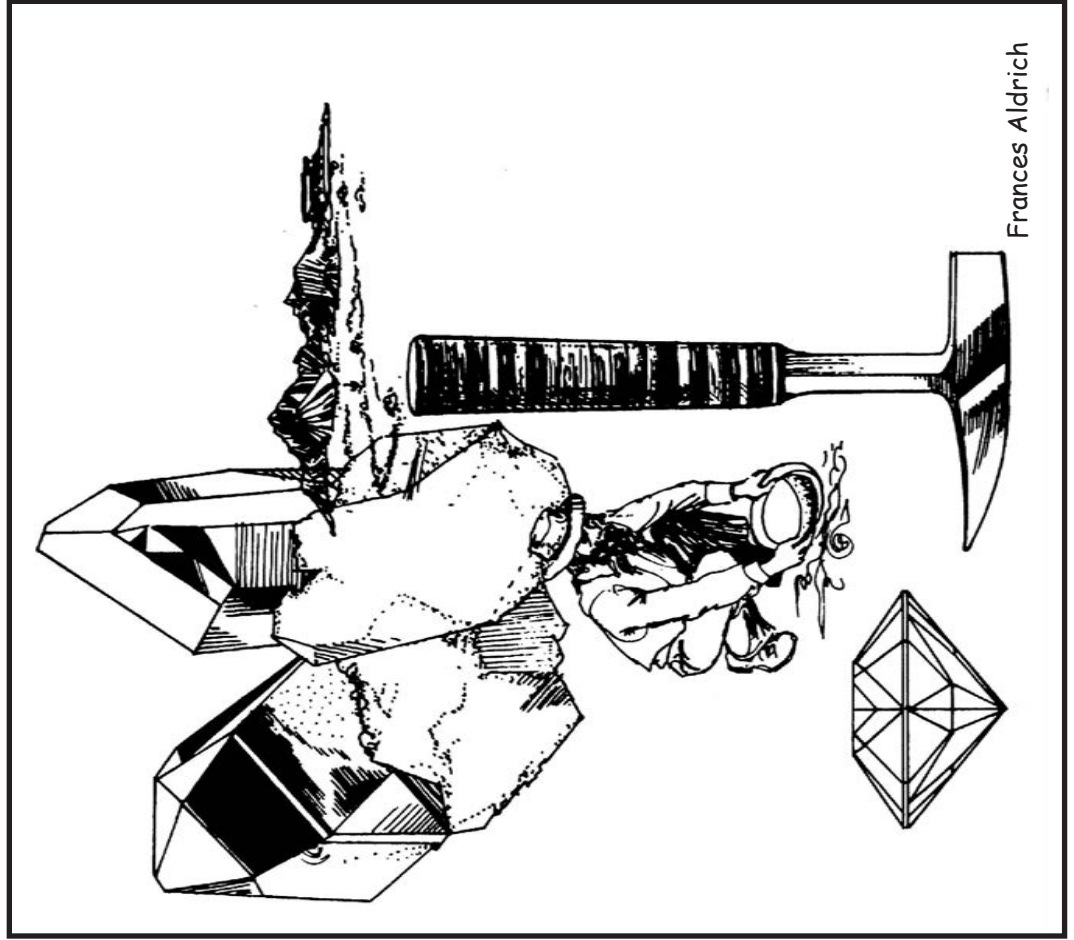


CLUB, INC.

CULVER CITY, CALIFORNIA, USA

FIRST CLASS

CULVER CITY ROCK & MINERAL CLUB



Frances Aldrich

the Nugget  
Lynne Lukert, editor  
601 N. Bronson Ave  
Los Angeles, CA 90004